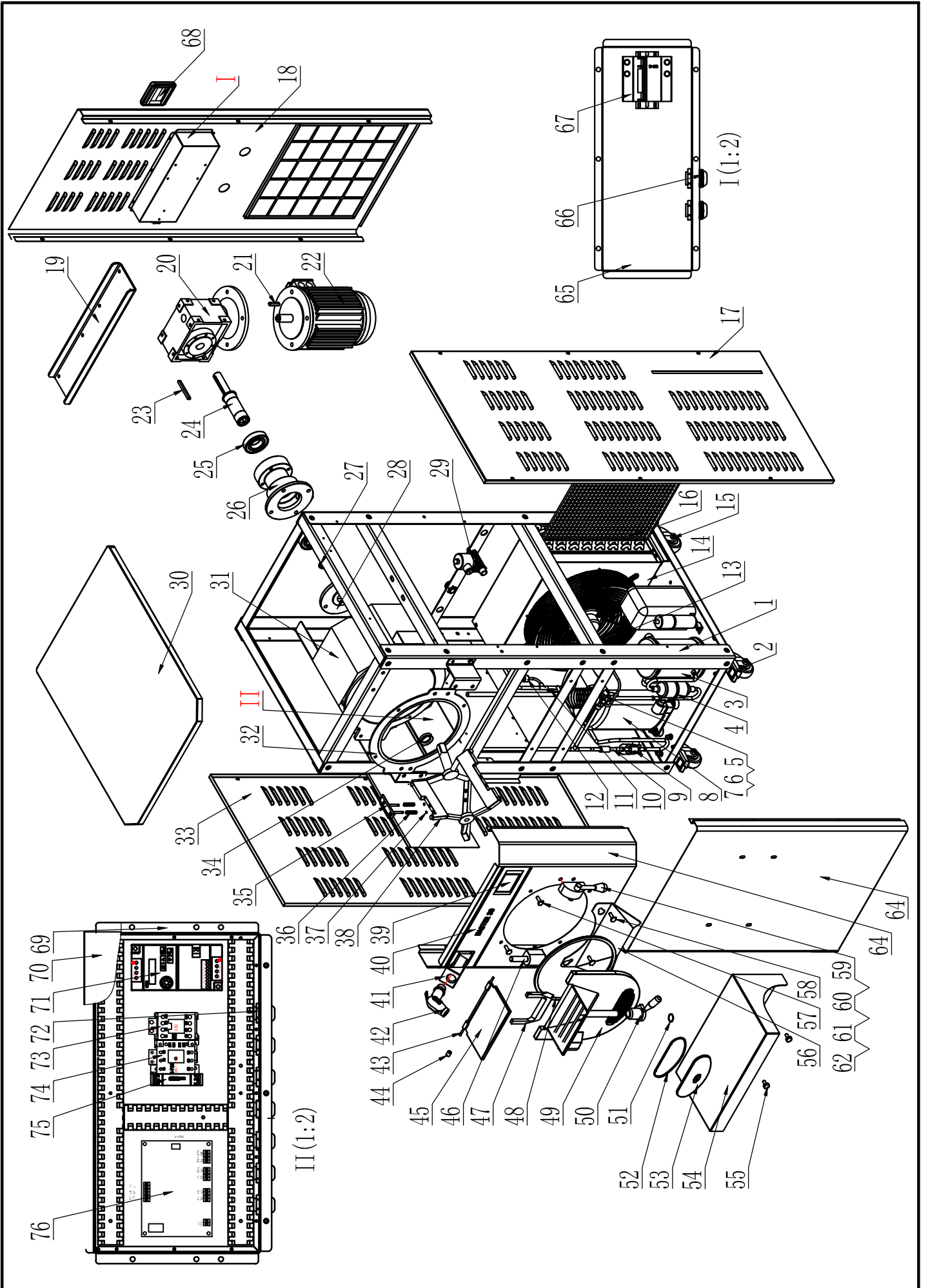


БАТЧ ФРИЗЕР ДЛЯ МОРОЖЕНОГО CARPINI MASTER20 A



| № | Код | Наименование | Кол. |
|----|--------|---|------|
| 1 | 363614 | M20 frame | 1 |
| 2 | 360878 | Universal wheel 4" brake | 2 |
| 3 | 032718 | Liquid Reservoir (XFAH-3074) | 1 |
| 4 | 471612 | DTG-A08030-901 one-way filter | 1 |
| 5 | 300552 | Expansion valve TES2B Series 068Z3421 | 1 |
| 6 | 361049 | Orifice Assembly 068-2092(2# spool) | 1 |
| 7 | 032717 | Expansion valve protective sleeve 114040003 | 1 |
| 8 | 423030 | Compressor FH2480ZXG1A | 1 |
| 9 | 359734 | Solenoid valve 032B2043(CSV6) +359733 | 2 |
| 10 | 055576 | Check valve NRV10S | 1 |
| 11 | 032694 | Filling valve 1/4 inch | 2 |
| 12 | 359561 | High voltage switch PC-439-435K348K OFF:3.0MPa ON:2.4MPa | 1 |
| 13 | 359686 | Fan YWF4E-350B-102/34-G 220V 50-60HZ | 1 |
| 14 | 359679 | Condenser MASTER30 is used | 1 |
| 15 | 360879 | Directional wheel 4" activity | 2 |
| 16 | 361201 | Air filter M30 | 1 |
| 17 | 439342 | WDONE right panel assembly | 1 |
| 18 | 439347 | WDONE Rear panel (air cooled) R20 arc | 1 |
| 19 | 399606 | WDONE reducer support plate | 1 |
| 20 | 518609 | Reducer DWS063HV15D2590B14 | 1 |
| 22 | 359715 | Motor M2D9022 P1 B14 | 1 |
| 23 | 359590 | Reducer shaft key IC5/IC8 | 1 |
| 24 | 360037 | Axis MASTER20 | 1 |
| 25 | 361007 | Deep groove ball bearing SKF 6208-2RZ | 2 |
| 26 | 360046 | Bearing block MASTER20 | 1 |
| 27 | 363259 | Shaft with elastic retaining ring Φ 40 | 1 |
| 28 | 360222 | Insulation pad MASTER20 | 1 |
| 29 | 501930 | Water inlet solenoid valve 2W-160-15 | 1 |
| 30 | 469925 | M30 upper panel weldment (pressed version) - R20 arc | 1 |
| 31 | 363701 | MASTER20 drums foam assembly | 1 |
| 32 | 360185 | Heat shield MASTER30 | 1 |
| 33 | 399625 | WDONE left panel lengthened | 1 |
| 34 | 360097 | Sealed MASTER30 | 1 |
| 35 | 363174 | Scraper assembly MASTER30 | 3 |
| 36 | 417671 | Blade spring diameter 7.5mm wire diameter 1.5mm pitch 2.5mm free height 35 | 6 |
| 37 | 363393 | O-ring inner diameter Φ 2.8*1.8 food grade silicone rubber | 6 |
| 38 | 464342 | Agitator assembly weldment M20 | 1 |
| 39 | 442231 | Circuit board AG-IC10/ New M10 | 1 |
| 40 | 450393 | Control panel sticker MASTER20 AMP version | 1 |
| 41 | 360073 | Shower holder MASTER30 | 1 |
| 42 | 359537 | Shower head TP003 | 1 |
| 43 | 363403 | Funnel cover shaft M30 Φ 5.3 *290mm stainless steel 304 | 1 |
| 44 | 363404 | Funnel cover shaft sleeve M30 Φ 12 *5*15mm POM | 1 |
| 45 | 360165 | Funnel cover MASTER30 | 1 |
| 46 | 360059 | Hinge seat MASTER30 | 1 |
| 47 | 360164 | Baffle MASTER30 | 1 |
| 48 | 434686 | Door body sealing ring 278*258*7.5mm | 1 |
| 49 | 360048 | Door weldment MASTER30 | 1 |
| 50 | 417676 | Discharge handle SE5 | 1 |

| № | Код | Наименование | Кол. |
|----|--------|--|------|
| 51 | 362931 | O-ring Φ 14(inner diameter)*2.65 Food grade (3060 pump suction pipe) | 1 |
| 52 | 421542 | Discharge door seal ring M10 | 1 |
| 53 | 448279 | Discharge door SE5 | 1 |
| 54 | 399619 | WDONE workbench welds | 1 |
| 55 | 359528 | Bucket table fixing screw IC5 | 2 |
| 56 | 363436 | M30 discharge tray | 1 |
| 57 | 360115 | Horizontal drum mounting screw MASTER series | 2 |
| 58 | 363173 | Feed guide screw | 2 |
| 59 | 360060 | Lock block MASTER30 | 1 |
| 60 | 360074 | Eccentric axis MASTER30 | 1 |
| 61 | 360085 | Handle MASTER30 | 1 |
| 62 | 363406 | Handle sleeve M30 16*31mm POM | 1 |
| 63 | 363421 | M30 front panel welded | 1 |
| 64 | 399616 | WDONE Front panel (bottom) R10 arc | 1 |
| 68 | 359569 | Three-phase break switch waterproof cover | 1 |

| I | | | |
|----|--------|---|---|
| 65 | 399623 | WDONE switch waterproof box | 1 |
| 66 | 269685 | Cable sheath PG16 | 2 |
| 67 | 386858 | Circuit breaker (BHA24C32) 4P 230V 32A | 1 |
| II | | | |
| 69 | 399609 | WDONE Electrical Box enclosure Panel 1 +399610 | 1 |
| 70 | 399611 | WDONE electrical box cover | 1 |
| 71 | 408497 | Inverter SL3-021-2.2K(Shilin AC IPH 200- 240V) | 1 |
| 72 | 314756 | Cable sheath PG13.5 | 7 |
| 73 | 359743 | Ac contactor S-P11(220-240V/50HZ 240- 260V/60HZ) | 1 |
| 74 | 359751 | Ac contactor S-P25(220-240V/50HZ 240- 260V/60HZ) | 1 |
| 75 | 359758 | Three-phase relay (DPA51/CM44B014T) | 1 |
| 76 | 442231 | Circuit board AG-IC10/ New M10 | 1 |